

FRIDAY FANFARE - JANUARY 30, 2026

NEWSLETTER

MTSU*School
of Music*

DIRECTOR'S MESSAGE

Dr. Chris Combest, Assistant Director, chris.combest@mtsu.edu

This week's been a clear reminder that our work doesn't happen in a bubble. We've been remote all week as winter weather keeps exerting its influence across Tennessee. A lot of our colleagues and students are still dealing with power and heat outages in Nashville and nearby areas. Others are navigating closed roads, disrupted schedules, and the stress that comes when daily life gets turned upside down. In weeks like this, the priorities get simple fast. Safety comes first. People come first.

Yesterday was also supposed to be a celebration. Our recital hour was meant to highlight faculty performance, a chance to gather, listen, and honor the artistry that strengthens our School. Nature had other plans. It didn't happen the way we'd planned, and it's okay to feel that disappointment. So what's our takeaway? For me, it's this: excellence isn't only measured by what happens on stage. It's also measured by how we respond when the stage isn't available. This week I've seen faculty checking in on students, colleagues offering help, staff adjusting plans with patience, and students showing real grace toward each other.

We'll reschedule the recital hour. The music will be heard. The celebration will happen. Until then, if you're still dealing with outages or unsafe conditions, please know you're not alone. This community is with you. Stay safe, take care of yourselves, and take care of each other.

DR. BRYAN HAYSLETT'S

LULLABY Project

6PM | FRIDAY, FEB 6, 2026
HINTON HALL AT MTSU

NEWLY COMMISSIONED LULLABIES FOR CELLO
FREE AND OPEN TO THE PUBLIC

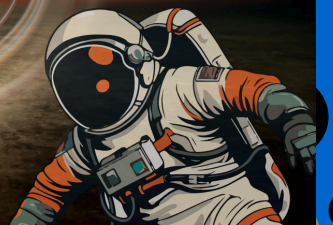
HORIZONS

Chris Combest, tuba
Gyuhee Kim, piano
Brian Mueller, percussion



Prokofiev
Gibbing
Ceethan
Penderecki
Corley

MTSU Faculty Recital
Tuesday, February 10th
8pm, Hinton Hall
MTSU School of Music
Free and open to the public



FEATURED FACULTY: CHRISTOPHER DYE, MUSIC EDUCATION

Christopher Dye serves as Professor of Instrumental Music Education and Assistant Director of the School of Music at Middle Tennessee State University. He teaches instrumental methods and materials, supervises student teachers, leads the Music Education Seminar, and teaches graduate courses in assessment, technology, policy, and advocacy. Dr. Dye holds degrees from the University of Illinois at Urbana-Champaign, Columbus State University, and Texas Lutheran University. Before joining MTSU, he taught at the Indiana University Jacobs School of Music and worked with university bands and music education at Illinois. His research focuses on policy and instrumental pedagogy, with publications in leading journals. He leads state and national music education advocacy efforts and serves as an advisor for Music Makes Us.



MTSU CENTER FOR CHINESE MUSIC AND CULTURE

10th Anniversary Celebration Concert



FEATURING YAZHI GUO

A world-leading performer of Chinese wind instruments and a member of the Silk Road Ensemble



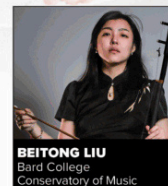
HAIGONG DENG
Florida State University



YUXIN MEI
University of North Texas



JINGYI ZHAN
Shaanxi Normal University



BEITONG LIU
Bard College
Conservatory of Music

Saturday, March 21 • 7:30 p.m.
Hinton Music Hall, Wright Music Building, MTSU

With **MTSU Jazz Faculty**, **MTSU Chinese Music Ensemble** and alumni,
and **Middle Tennessee Community Zheng Ensemble**

Led by **Mei Han**, Director, Center for Chinese Music and Culture

Presented by MTSU International Affairs, MTSU School of Music, MTSU Center for Chinese Music and Culture, and the Distinguished Lecture Fund



Center for Chinese
Music and Culture

**MIDDLE
TENNESSEE**
STATE UNIVERSITY.
SCHOOL OF MUSIC

**MIDDLE
TENNESSEE**
STATE UNIVERSITY.
Office of
International Affairs

©126-8529 / MTSU prohibits discrimination based on sex, race, color, national origin, or other protected categories. Report concerns to the Title IX Coordinator. See the full policy at cis.mtsu.edu.

I AM *true* **BLUE**

STUDENT SPOTLIGHT

Brent Isaac Webb, junior horn performance major, recently made his professional orchestra debut after stepping in to play second horn on the Chattanooga Symphony Holiday Pops. This kind of opportunity takes preparation, confidence, and steady musicianship under pressure. Brent delivered, and we're proud to see him representing MTSU at a high level. He's pictured here with Chattanooga Symphony principal horn Gordon James. Congratulations, Brent.





Grace Gonzalez Whitten and **Kiefer Berks** recently performed for the unveiling of “Benjamin on the Bench” at the Williamson County Archives and Museum in Franklin, Tennessee. Sponsored by the Old Glory Chapter DAR, this meaningful event honored local history while highlighting the talent and professionalism of our students. Grace and Kiefer represented MTSU with poise, musicianship, and pride. Well done.

ALUMNI HIGHLIGHT

Two MTSU graduates took an uncommon path in music. Jonathan and Ashley Copeland turned their training, discipline, and values into Clarinets by Copeland, a growing family business built on craft, care, and access. Their story shows how a liberal arts education can lead to meaningful work beyond the expected path.

Read more at <https://mtsunews.com/mtsualumni-clarinets-by-copeland/>



Congratulations to **Molly Clayton** (MM, May 2025) has been selected as one of three finalists for the Mid-South Flute Festival Young Artist Competition. This is a wonderful recognition of her artistry, dedication, and musical voice. We’re excited to see her represent MTSU and wish her the very best in the final round. Bravo, Molly.



MTSU MUSIC MONDAY IS LIVE!

High school juniors and seniors, MTSU Music Monday is your chance to step into a real day at the MTSU School of Music and picture yourself here. Registration is open now, and spots are limited. [Music-Monday-Schedule-for-Web](#)

- **Monday, February 16, 2026** starts with registration, refreshments, and a welcome in the Wright Music Building lobby, followed by a Music Mixer where you can explore areas like ensembles, jazz studies, music industry options, scholarships and financial aid, housing, student life, and more. [Music-Monday-Schedule-for-Web](#), You will also choose from hands-on experiences throughout the day, including classroom sessions (like percussion techniques, music industry, theory, and music education), masterclass and ensemble options, open office hours with degree coordinators and faculty, and audition opportunities. The day wraps with a School of Music Showcase Concert that is open to parents and the public, plus an evening composition recital.

View the schedule [HERE](#) and register before FEBRUARY 1st [HERE](#)

REGISTRATION ENDS SUNDAY NIGHT!



MTSU MUSIC MONDAY

Save the Date

Learn about Careers in Music
Eat lunch with SOM students
Sit in on classes
Play with ensembles
Seniors may audition
Enjoy a Final Concert
Explore opportunities at Music Mixer

MTSU
School of Music
Where every note counts

02/16/26
All Day Event

Register at www.music.mtsu.edu after 12/19

UPCOMING EVENTS

Sunday, February 1 – ~~Slide by Slide: Trombone Takeover, 2:00–6:15 pm (Hinton Hall)~~ CANCELLED

Wednesday, February 4 - Daniel Kuk, Senior Jazz Piano Recital, 700pm (Hinton Hall)

Friday, February 6 - Dr. Bryan Hayslett Faculty Cello Recital, 600pm (Hinton Hall)

PARKING NOTICES

Friday, January 30 | 1:00 pm to 7:00 pm

Basketball

Location: Greenland Lot, Hall of Fame, Raider Drive

Spaces impacted: All spaces

Sunday, February 1 | 7:00 am to 4:30 pm

Contemporary Issues in Indigenous Religions

Location: Alma Mater Lot

Spaces impacted: 1 space

Sunday, February 1 | 7:00 am to 1:00 pm

Groundhog Day Luncheon

Location: STU Lot

Spaces impacted: All spaces

Tuesday, February 3 | 4:30 pm to 7:30 pm

Basketball

Location: Greenland Lot, Hall of Fame, Raider Drive

Spaces impacted: All spaces

Wednesday, February 4 | 7:00 am to 8:00 pm

Ken Burns Documentary

Location: Front of Tucker (2 spots) and Smith Lot

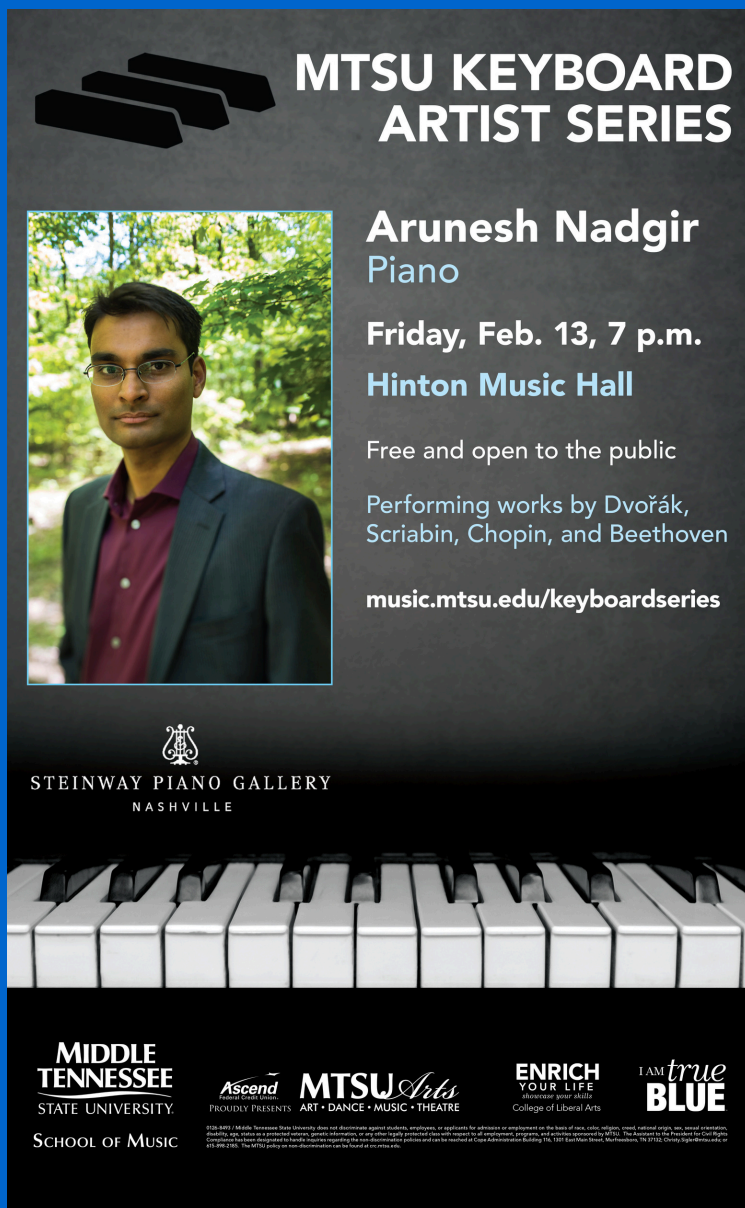
Spaces impacted: All spaces

Friday, February 6 | 2:30 pm to 3:30 pm


Admitted Student's Day

Location: East Main and Old Main Circle

Spaces impacted: All spaces



MTSU KEYBOARD ARTIST SERIES



Arunesh Nadgir
Piano

Friday, Feb. 13, 7 p.m.
Hinton Music Hall

Free and open to the public

Performing works by Dvořák, Scriabin, Chopin, and Beethoven

music.mtsu.edu/keyboardseries

STEINWAY PIANO GALLERY
NASHVILLE

MIDDLE TENNESSEE STATE UNIVERSITY
SCHOOL OF MUSIC

Ascend PROUDLY PRESENTS MTSU Arts ART • DANCE • MUSIC • THEATRE

ENRICH YOUR LIFE
College of Liberal Arts

I AM true BLUE

©2020 MTSU. Middle Tennessee State University does not discriminate against students, employees, or applicants for admission or employment on the basis of race, color, religion, creed, national origin, sex, sexual orientation, gender identity, or status as a protected veteran, genetic information, or any other legally protected class with respect to its admissions programs, and activities sponsored by MTSU. The University of the Middle Tennessee State University is an Equal Opportunity Institution. For more information, contact the Office of Institutional Equity, 116, 1381 East Main Street, Murfreesboro, TN 37132. Contact: equity@mtsu.edu

The FRIDAY FANFARE is a weekly newsletter of the MTSU School of Music edited by Dr. Chris Combest - chris.combest@mtsu.edu

Want to see your event, faculty, student news featured? Submit it to the [Director's Advisory Box](#)

Share your Alumni news at <https://forms.office.com/r/8Eu72excj6>

To learn more about our programs and events at the School of Music, please visit music.mtsu.edu.