

# MTSU Ensemble Auditions, Spring 2026

Auditions will be held in January 2026. Audition date/time TBD. Sign-up for a time here: <https://www.mtsu.edu/music/auditioninformation.php>

All auditions will be blind (behind a screen) for candidate anonymity. Additional details will be provided.

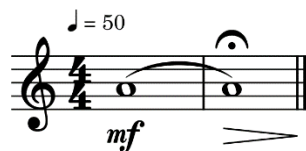
Contact Dr. Keith Sorrels if you have questions: [keith.sorrels@mtsu.edu](mailto:keith.sorrels@mtsu.edu)

## Repertoire

All candidates will play the A440 (as notated) and four required oboe excerpts in the order below. Play the requested portions of the excerpts only.

1. A440
2. Igor Stravinsky, Pulcinella Suite
3. Dmitri Shostakovich, Symphony No. 7
4. J.S. Bach: Cantata No. 82, "Ich Habe Genug"
5. Gustav Mahler, Symphony No. 3

### 1. A440



## 2. Igor Stravinsky, Pulcinella Suite

Serenata, m1-10

2  
SERENATA

⑧ *Larghetto Solo*

⑨

⑩

2

Gavotta, reh. 73-74 (repeat = yes)

6  
GAVOTTA CON DUE VARIAZIONE

⑦③ *All. Mod.*

⑦④

*pp*

3

3. Dmitri Shostakovich, Symphony No. 7, Op. 60; one after 76 – two after 79

Handwritten musical score for the first staff of Dmitri Shostakovich's Symphony No. 7, Op. 60, measures 76 to 79. The score is written on a single staff with a treble clef and a key signature of one sharp (F#). The time signature is 5/4. The notation includes various musical symbols such as notes, rests, accidentals, and dynamic markings. The score is divided into measures by vertical bar lines. The first measure is marked with a box containing the number 76. The second measure is marked with a box containing the number 77. The third measure is marked with a box containing the number 78. The fourth measure is marked with a box containing the number 79. The score ends with a double bar line and a box containing the number 80. The score is written in a clear, legible hand.

76

Ob. Solo

77

78

79

cresc. ....

Rit

4. J.S. Bach: Cantata No. 82, "Ich Habe Genug," m1-35

The image displays a musical score for J.S. Bach's Cantata No. 82, "Ich Habe Genug," measures 1-35. The score is written for a single melodic line in G minor, 3/8 time. It begins with a treble clef, a key signature of two flats (B-flat and E-flat), and a 3/8 time signature. The first measure is marked with a '1' above the staff. The melody is characterized by frequent eighth-note patterns, often beamed together in groups of four or six. Measures 10, 15, 20, 26, and 31 are marked with their respective measure numbers at the beginning of the line. The score concludes with a double bar line and a final measure marked with a '1' above the staff.

5. Gustav Mahler, Symphony No. 3, Mvt. 2, m1-19

Tempo di Menuetto. Grazioso. Sehr mässig. Ja nicht eilen.

*p*zart

*express.*

*poco rit.*

*a tempo*

*pp*

5

*пекрeнь.*

*pp* 3

1 1 1